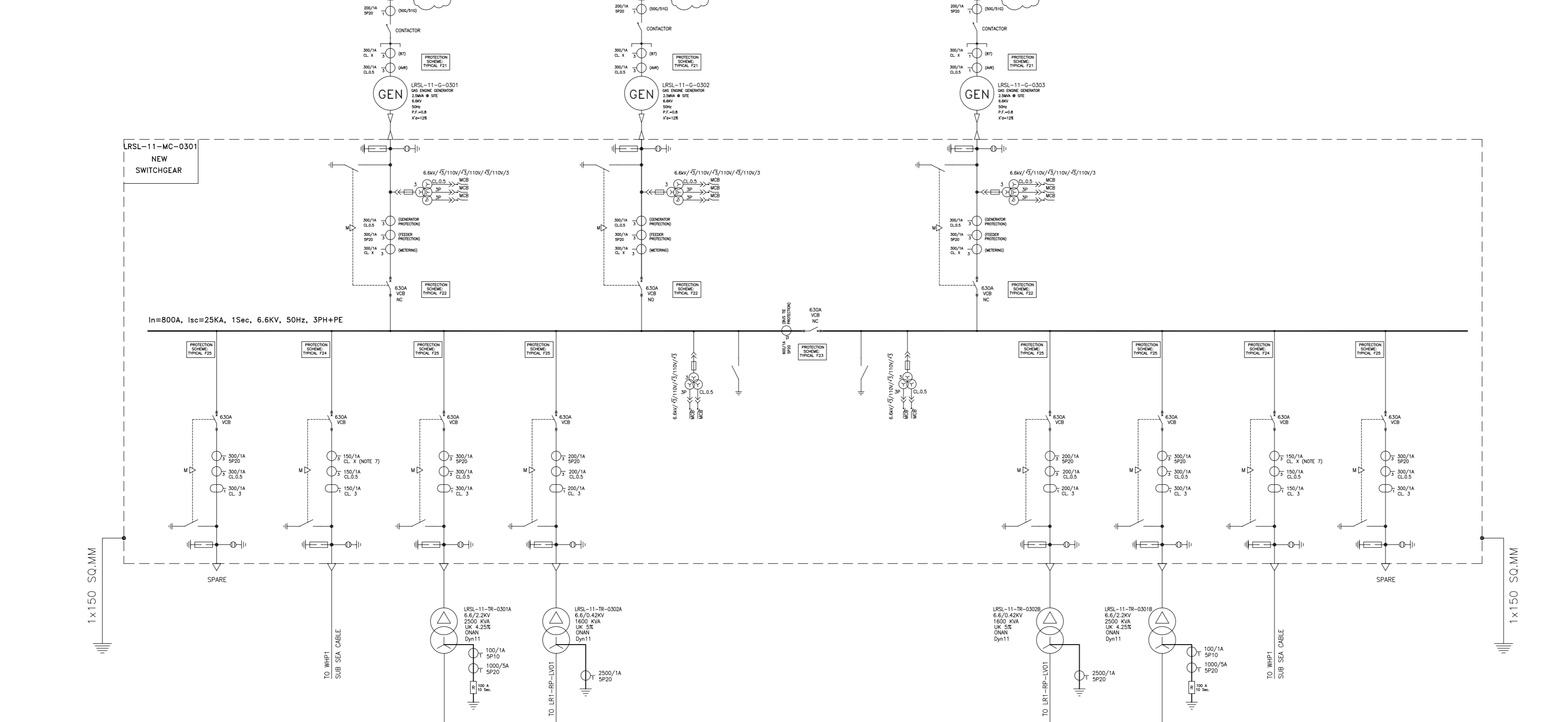
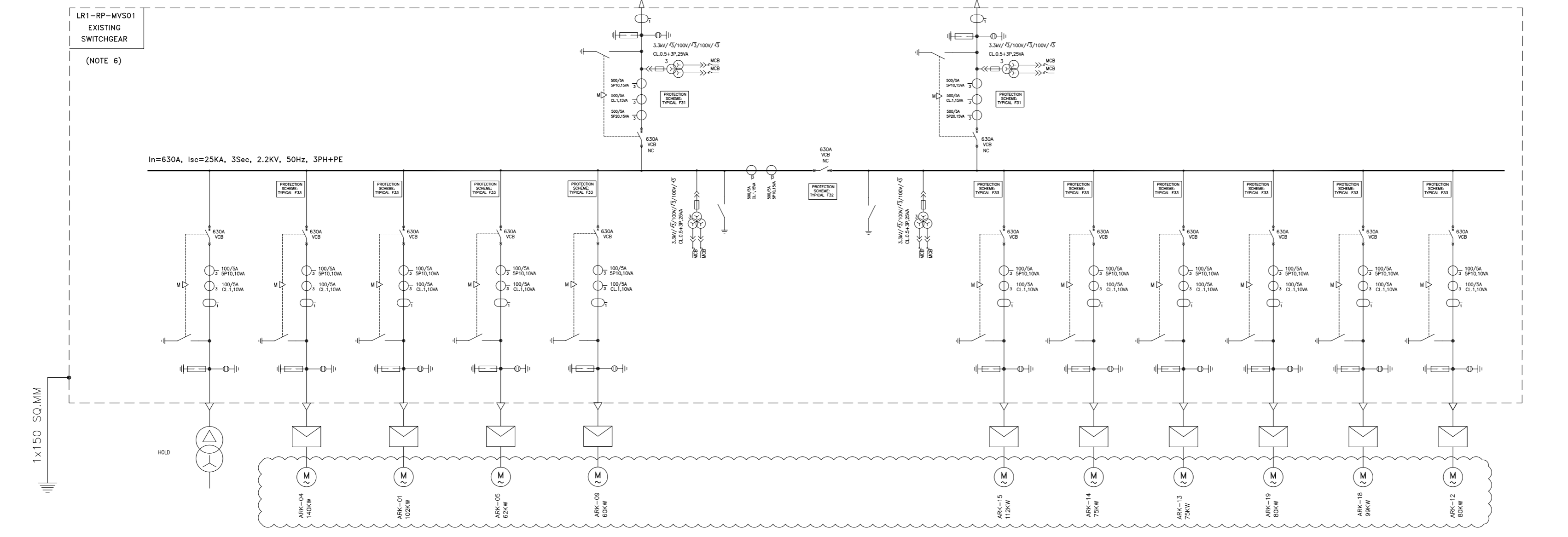


SERVICE PLATFORM



DRILLING PLATFORM



GENERAL NOTES

- DC POWER SHALL BE SUPPLIED EXTERNALLY FOR EACH SECTION OF SWITCHGEAR (BUS A, BUS B).
- EXACT CHARACTERISTICS OF ALL CTs SHALL BE PREPARED BY VENDOR.
- BURDEN OF ALL CURRENT AND VOLTAGE TRANSFORMERS SHALL BE CALCULATED BY VENDOR.
- CIRCUIT BREAKER, CONTACTOR, FUSE AND CT RATINGS SHALL BE FINISHED BY SWITCHGEAR MANUFACTURER.
- TEMPERATURE DE-RATING FOR CURRENT-CARRYING CAPACITIES OF THE CIRCUIT BREAKER AND CONTACTORS SHALL BE CONSIDERED BY SWITCHGEAR MANUFACTURER.
- SWITCHGEAR LR1-RP-MVSD1 EXISTED AND IS NOT IN SCOPE OF MANUFACTURER.
- SPECIFICATION OF THESE CTs SHALL BE SAME AS CT OF DOWNSTREAM SWITCHGEAR (IN WORK-6-6kV SWITCHGEAR) DUE TO USING LONGITUDE DIFFERENTIAL RELAY.
- SIZE OF NEUTRAL POINT OF GED WILL BE SPECIFY BY ITS VENDOR.

SPECIFIC NOTES

ABBREVIATIONS & LEGEND

- POWER TRANSFORMER WITH TWO WINDINGS
ONAN : OIL-IMMERSED, OIL NATURAL AIR NATURAL COOLING
AN : NATURAL AIR COOLED
- 3 PHASE WINDING, DELTA
- 3 PHASE WINDING, OPEN DELTA
- 3 PHASE WINDING, STAR
- TRANSFORMER WITH CONTROL UNIT FOR ESP MOTORS
- INDUCTION MOTOR
- GENERATOR
- BUS DUCT
- CIRCUIT BREAKER
- NORMALLY OPEN
- NORMALLY CLOSED
- 4P : 4 POLES
- LT : LONG TIME FUNCTION
- ST : SHORT TIME FUNCTION
- INST : INSTANTANEOUS FUNCTION
- EARTH FAULT FUNCTION
- ELCB : EARTH LEAKAGE CIRCUIT BREAKER
- CONTACTOR
- WITHDRAWABLE OR PLUG IN EQUIPMENT
- MOULDED CASE CIRCUIT BREAKER(MCCB)
- REMOVABLE FUSE WITH FIXED CARRIER
- NGR (NEUTRAL GROUND RESISTOR)
- SURGE ABSORBER WITH EARTHING

REFERENCE DRAWINGS

DESCRIPTION	DWG. No.
Electrical Design Criteria	LRSL-000-EL-DB-603
Specification for MV Switchgear	LRSL-000-EL-SP-613
Specification for LV Switchgear	LRSL-000-EL-SP-612
Electrical Load List & Load Balance	LRSL-R1X-EL-LI-002
Electrical System Study	LRSL-R1X-EL-ST-002
Schematic Diagram for MV Switchgear	LRSL-R1X-EL-SM-001
Schematic Diagram for LV Switchgear	LRSL-R1X-EL-SM-002
Symbol & Legend for Electrical System	LRSL-000-EL-DR-609
Overall Single Line Diagram	LRSL-R1X-EL-SD-007

KEY PLAN

Rev	Date	PURPOSE OF ISSUE	Orig	By	Prep'd	Check'd	App'd	Company App'd
02	06-Nov-21	Issued for Approval	IOEC		M. Sabzi	P. S.	M.A.	
01	01-Aug-21	Issued for Approval	IOEC		S.Safari	A.Samadi	M.Aghaei	
00	25-Apr-21	Issued for Comment	IOEC		S.Safari	A.Samadi	M.Aghaei	

CLIENT: Iranian Offshore Oil Company

CONTRACTOR: IOEC

SUB-CONTRACTOR: INTELLIGENCE SOLUTIONS INC., TR Consulting Engineer

Project No: 2-98-5365 Doc. Class: 2 Size: A2 Scale: N.T.S.

Project Name : Resalat Oil Field Development - Phase 1 (EPC-EPD)

TITLE : MV Single Line Diagram

DRAWING No. LRSL-R1X-EL-SD-008 SHT. NO. 1 OF 1 Rev. 02