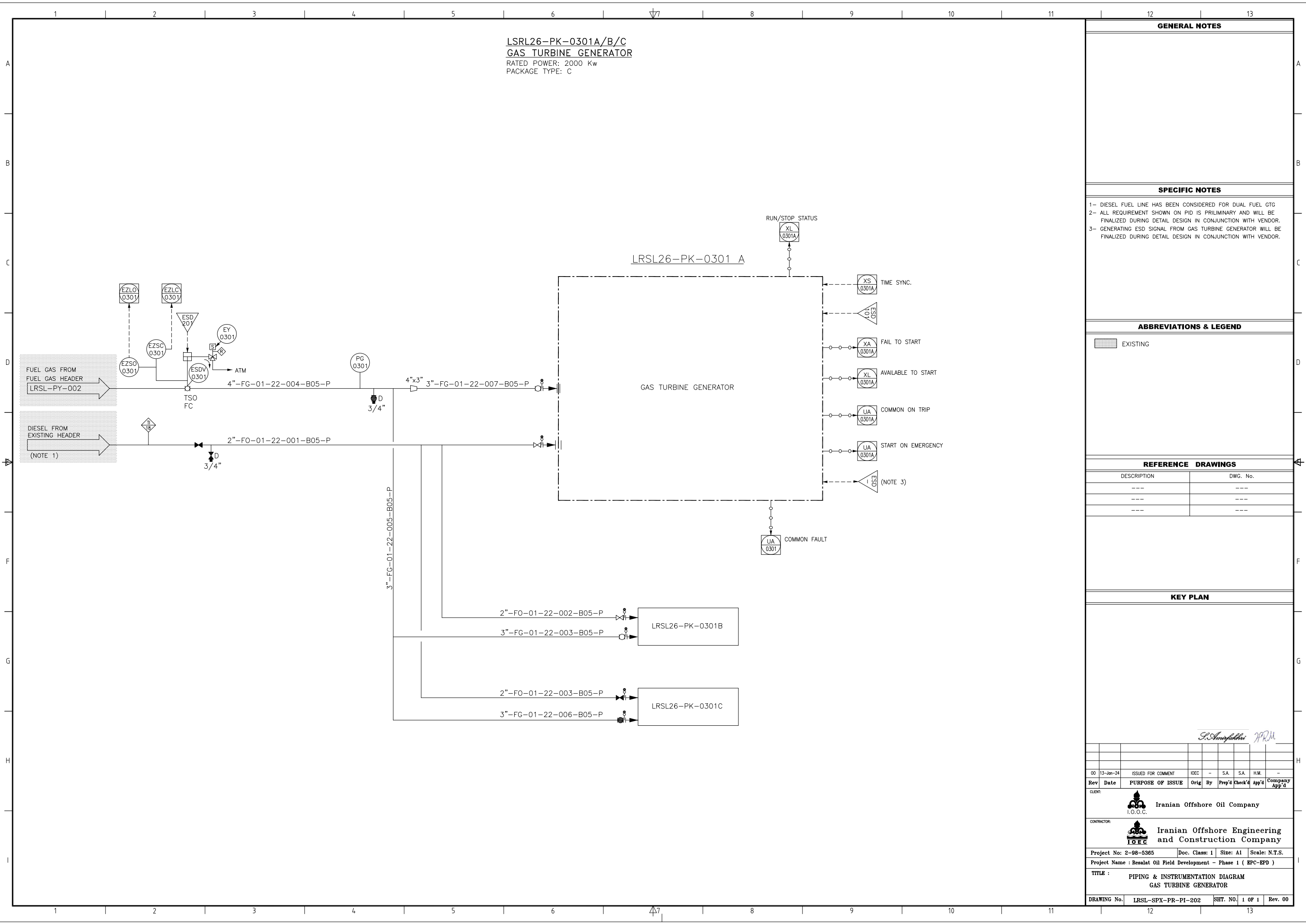


LSRL26-PK-0301A/B/C  
**GAS TURBINE GENERATOR**  
 RATED POWER: 2000 Kw  
 PACKAGE TYPE: C



**GENERAL NOTES**

**SPECIFIC NOTES**

- 1- DIESEL FUEL LINE HAS BEEN CONSIDERED FOR DUAL FUEL GTG
- 2- ALL REQUIREMENT SHOWN ON PID IS PRILIMINARY AND WILL BE FINALIZED DURING DETAIL DESIGN IN CONJUNCTION WITH VENDOR.
- 3- GENERATING ESD SIGNAL FROM GAS TURBINE GENERATOR WILL BE FINALIZED DURING DETAIL DESIGN IN CONJUNCTION WITH VENDOR.

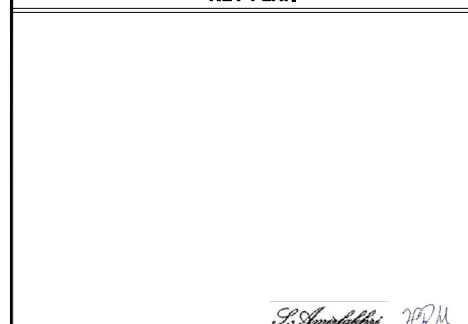
**ABBREVIATIONS & LEGEND**

	EXISTING
--	----------

**REFERENCE DRAWINGS**

DESCRIPTION	DWG. No.
---	---
---	---
---	---

**KEY PLAN**



Rev	Date	PURPOSE OF ISSUE	Orig	By	Prep'd	Check'd	App'd	Company
00	13-Jan-24	ISSUED FOR COMMENT	IOEC	-	S.A.	S.A.	H.M.	-

CLIENT: Iranian Offshore Oil Company

CONTRACTOR: Iranian Offshore Engineering and Construction Company

Project No: 2-98-5385 | Doc. Class: I | Size: A1 | Scale: N.T.S.  
 Project Name : Resalat Oil Field Development - Phase 1 ( EPC-EPD )

TITLE : PIPING & INSTRUMENTATION DIAGRAM  
 GAS TURBINE GENERATOR

DRAWING No. LRSL-SPX-PR-PI-202 | SH. NO. 1 OF 1 | Rev. 00